



HD IP Camera User Manual



Configurable H.264
Encoded IP Camera



Table of Contents

Document History	4
About the User Manual	5
• User Manual Part Number	5
Warranty and Support	5
Introduction	6
• HD IP Camera Types	7
• Part Numbers	7
The HD IP Camera Kit	8
• Kit Contents	8
Connecting the Camera	10
• Cable Connections	10
• PC Connection	11
• Camera Login	11
• Default IP Address	11
• PC IP Address Configuration	12
Web Browser Control	14
• User Menu	14
• Date Menu	15
• Update Menu	15
• Video Menu	16
• Video Frame Preview	17
• Alert Control	19
• Ethernet Menu	20
• HTTP Ports	20
• Unreachable Cameras	21
• UPnP Menu	22
• WiFi Menu	23
• Recording Menu	26
Recovering Recordings	28
• Record Format	28
• Using FileZilla	29
Using VLC to Play Streams	30
The VE Camera Viewer	32
• Viewing Video	32
• Video Panel Options	32
• Settings	33
• Play Recordings	33
• Video Panel Coloured Border	35
• Trigger Alarms	35
• Pan, Tilt & Zoom Control	35
• Advanced User	35



Table of Contents

Multiple Viewing	37
TCP Vs UDP	37
• Multiple Viewers	37
• TCP/UDP in VLC	37
ONVIF	38
• Video Management Systems	38
Control Across The Internet	39
• Port Forwarding	39
• Remote Configuration	40
• Remote Video Streaming	40
Mounting	41
Changing the Lens	42
• C and CS Mount Adaptors	42
Specifications	43
Connector Interfaces	44
Dimensions	45



Document History

Version	Date	Change Summary
v1.0	7/9/2015	Initial Draft
v1.1	12/12/2015	Update voltage range
v1.2	9/3/2016	Additions for SW2.0 including SD card
v1.3	15/3/2016	Added recording warnings
v1.4	21/3/2016	Memory stick references
v1.5	22/3/2016	Reformatted
v1.6	19/4/2016	Technical Edits
v1.7	30/6/2016	WiFi section added
v1.8	26/7/2016	Product Image Updates
v1.9	29/8/2017	Updates to support new software releases
v1.10	16/7/2018	Updates to support camera and player software releases
v1.11	5/10/2018	LED switching control, STA Mode additions
v1.12	27/05/2020	HTTP port control added
v1.13	04/06/2020	Control across the Internet added
v2.00	18/08/2020	Updates to support v4.0 firmware release
v2.01	04/07/2022	PC IP Address Configuration added



About the User Manual

This user manual describes the operation of the HD IP Camera.

Initially, the user manual introduces the camera's operation, to include a description of the various components in the camera kit and a guide to their use.

As part of this, hardware interfacing, connecting the camera to a PC, viewing video and configuration of the camera's functions are all described in detail.

Additionally the use of a range of software tools to both view the video and manage stored recording files is also covered.

The guide follows a step by step approach, describing the simple initialisation sequence to get the user up and running in the shortest possible time.

This is followed up with a description of mounting options, technical specifications and component dimensions.

User Manual Part Number

The VE part number for this manual is 110-8680

Warranty and Support

All Visual Engineering products are supplied as standard with a 12 month 'Return to Base' warranty.

In the event of a suspected product failure, users should contact the Visual Engineering support team on the telephone number +44 (0) 1206 211842 or please email us at:

support@visualengineering.co.uk

Should the fault persist or if the support team are unable to resolve the fault, it may be necessary to return the equipment.

Equipment should only be returned using the RMA (Returns Management Authorisation) process. Users should contact the support team on the above number and request an RMA number.



Introduction

The HD IP camera couples a 1080p30 high sensitivity system on chip imager with a highly integrated H.264 IP encoder.

These, together with the built-in microphone combine to produce a very compact IP camera with an ONVIF compliant output stream.

Visual Engineering has developed this core technology to deliver a configurable product to meet the needs of the professional surveillance market.

Customers can tailor their requirements to fit the application through lens mount, recording, WiFi, Power over Ethernet (PoE) and connector configurable options.

The camera supports short & long pinholes and M12 lenses as standard. C and CS lens mounts are also made available using an adaptor.

Full camera control which includes video configuration, integrated trigger capabilities, WiFi and recording setup is all supported via a web page interface.

The camera also supports control through the ONVIF protocol such that the camera can be controlled by and viewed on ONVIF compliant [VMS platforms](#).

The recording option features secure micro SD card storage. Access to the stored movie files can be either by physically removing the SD card or via FTP transfer using the [VE Camera Viewer](#) software or an FTP transfer software tool.

With the inclusion of the WiFi option it allows the video stream to be viewed on a WiFi enabled device. WiFi Access Point and Station modes are supported.

Dependant on configuration, the unit can be powered either by 12V DC, or Class 0 PoE.

It is housed in a CNC machined aluminium case to produce a camera that is robust, reliable and suitable for professional use.

HD IP Camera Types

The HD IP camera is available in three different body styles. For each body type there is the option to include the SD recording and WiFi options. The contents of each camera kit varies according to the camera type.

The three different body styles of the HD IP camera are shown below.



Straight Connector
Part No: 110-2753

Right Angle Connector
Part No: 110-2757



Power Over Ethernet
RJ45 Connector
Part No: 110-2761

Part Numbers

Each camera is fitted with a part number label. The label details the camera's default IP address and its unique serial number. The part number of each camera type is explained in the table below.

Option	Straight Connector	Right Angle Connector	PoE Connector
Standard	110-2753	110-2757	110-2761
SD	110-2754	110-2758	110-2762
WiFi	110-2755	110-2759	110-2763
SD and WiFi	110-2756	110-2760	110-2764



The HD IP Camera Kit



Kit Contents

The HD IP Camera is provided in a kit with mounts, DC power supply and lens adaptors. The kit contents vary depending upon the camera type. The kit contents for each type together with the individual part number of each component in the kit are described below.

Straight & Right Angle Camera Kit Contents

- Lens M12 – 2.1mm pinhole 110-2497
- Lens M12 – 4.3mm pinhole 110-2498
- Passive PoE Power Injector Cable 110-8301
- Cat 5e to Binder 8 Way Cable 110-8658
- Power Supply 15V – 1.6A with adaptors 110-8661
- Wall Tripod Mount 110-8665
- M12 Long Lens Adaptor 110-8667
- CS Mount Adaptor 110-8668
- C Mount Adaptor 110-8669
- USB Memory Stick 110-8679

Power Over Ethernet Camera Kit Contents

- Lens M12 – 2.1mm pinhole 110-2497
- Lens M12 – 4.3mm pinhole 110-2498
- 1M Cat 5e RJ45 Cable 110-8644
- Wall Tripod Mount 110-8665
- M12 Long Lens Adaptor 110-8667
- CS Mount Adaptor 110-8668
- C Mount Adaptor 110-8669
- USB Memory Stick 110-8679



Camera Kit Contents



- HD IP Camera



- Wall and tripod mount



- Long M12, C & CS lens adaptors



- Additional 2.1mm and 4.3mm lenses



- 1m Ethernet camera cable, not included with PoE model



- DC insertion cable, not included with PoE model



- Power supply with adaptors, not included with PoE model



- WiFi Antenna, if the WiFi option has been included



- USB memory stick, containing software applications and supporting documentation.

Connecting the Camera

The HD IP Camera is an IP streaming camera. Users therefore need access to a PC or similar networked enabled device to view the camera's video. Camera control can be accessed through its web browser interface.

To view the streaming video from the camera users should have a video player installed on their PC.

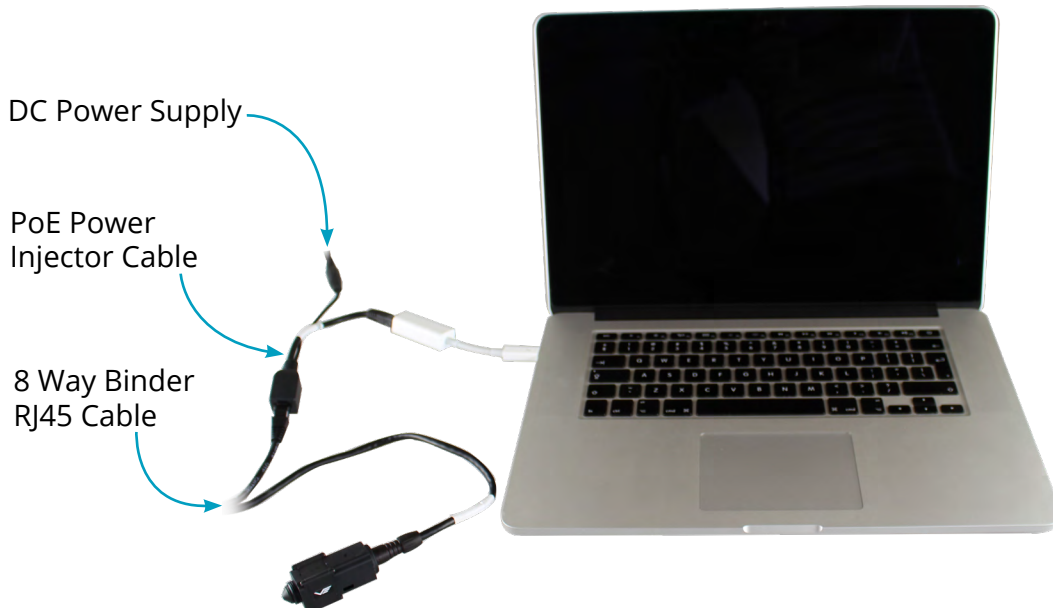
Visual Engineering recommends the use of the [VE Camera Viewer](#) to view the video.

Alternatively users can use VLC, this free media player that can be downloaded from:

http://www.videolan.org/vlc/index.en_GB.html

Cable Connections

The straight and right angle connector type cameras should be connected to a PC and power supply using the Ethernet and DC insertion cables as shown below. The DC adaptor should be connected to a mains supply.



The DC adaptor supplies the camera with 12V DC at 148mA. Alternatively, the camera can be operated with DC supplies from 6V to 18V if required.

The Power over Ethernet model must be connected to a network via a switch capable of Power over Ethernet type 0.

PC Connection

Once the camera is powered it is possible to view the camera's video and configure the encoder's parameters over an IP connection to a PC.

The web browser control of the camera's encoder allows the configuration of parameters such as resolution, bit rate, and network settings, once saved all configuration changes will be retained.

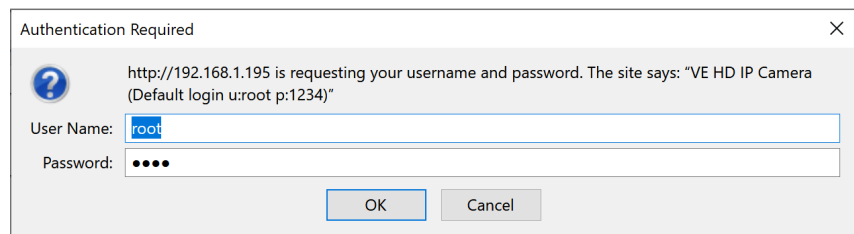
Browse to the camera's web page by typing the camera's IP address into the web browser address bar.

Camera Login

On trying to establish a connection the user will be prompted for the User Name and Password, enter the following details:

Default **User Name** is:
root

Default **Password** is:
1234



Default IP Address

HD IP cameras are by default set with a fixed IP address of **192.168.1.195**, this is detailed on the camera's part number label.

If the camera is not responding on this address it is possible that the IP address has been changed.

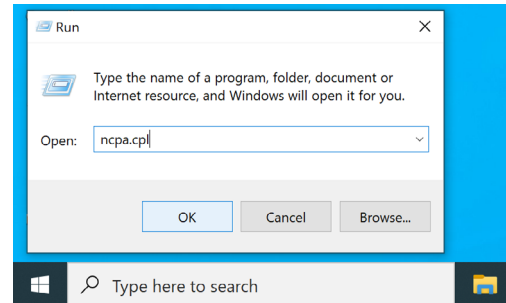
If the new IP address is unknown, the user can use the VE Camera Viewer software application to locate the IP address. This method is explained in the [VE Camera Viewer](#) section.



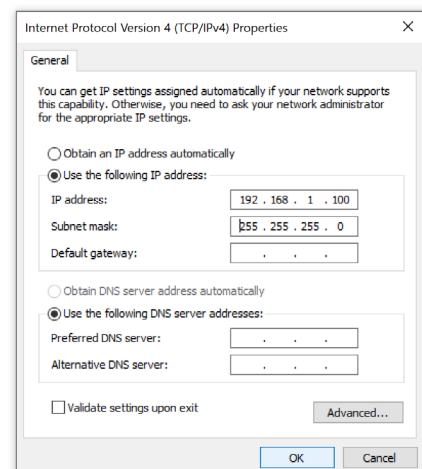
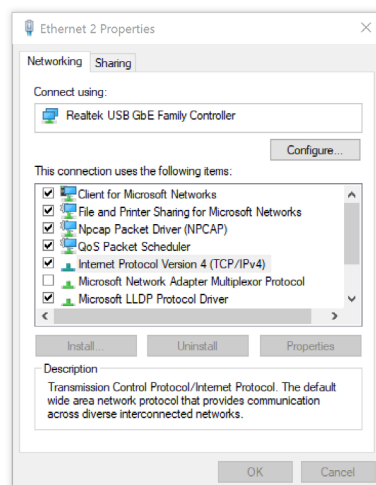
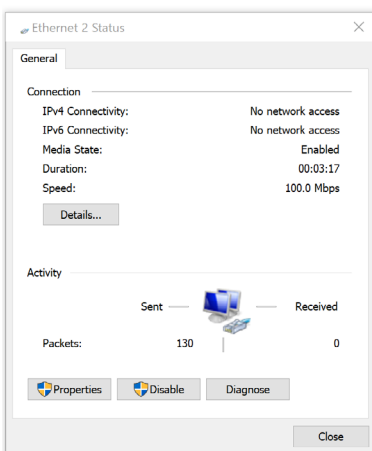
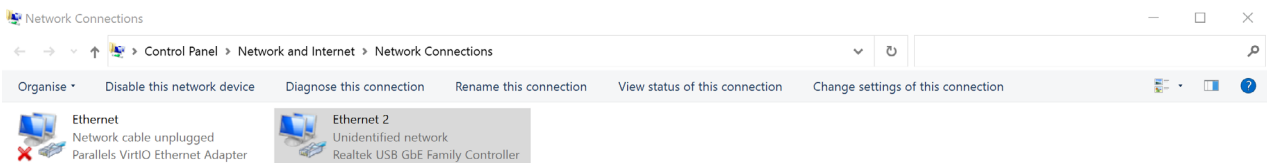
PC IP Address Configuration

If you are connecting the camera via Ethernet directly to a computer, you will need to configure the PC's network adapter to use a static IP address, this can be done using the steps below:

1. Open the Run app. (To do this, Press and hold Windows Key (W) on the keyboard, then press the "R" key)
2. Type the command "ncpa.cpl", then click OK.



3. Right click on the network adapter where the camera is connected to, then click "Properties". (If there are multiple adapters, the correct one can be identified by disconnecting the Ethernet cable from the camera, one of the adapters should now show "Network cable unplugged" and then upon reconnection of the cable it should eventually change to "Unidentified Network", this is the one connected to the Camera)
4. In the window that pops up, select "Internet Protocol Version 4 (TCP/IPv4)" then click "Properties".
5. Another window will now pop up, select "Use the following IP Address" and enter the following:
IP Address: 192.168.1.100, Subnet Mask: 255.255.255.0
6. Click "OK".
7. Click "Close".



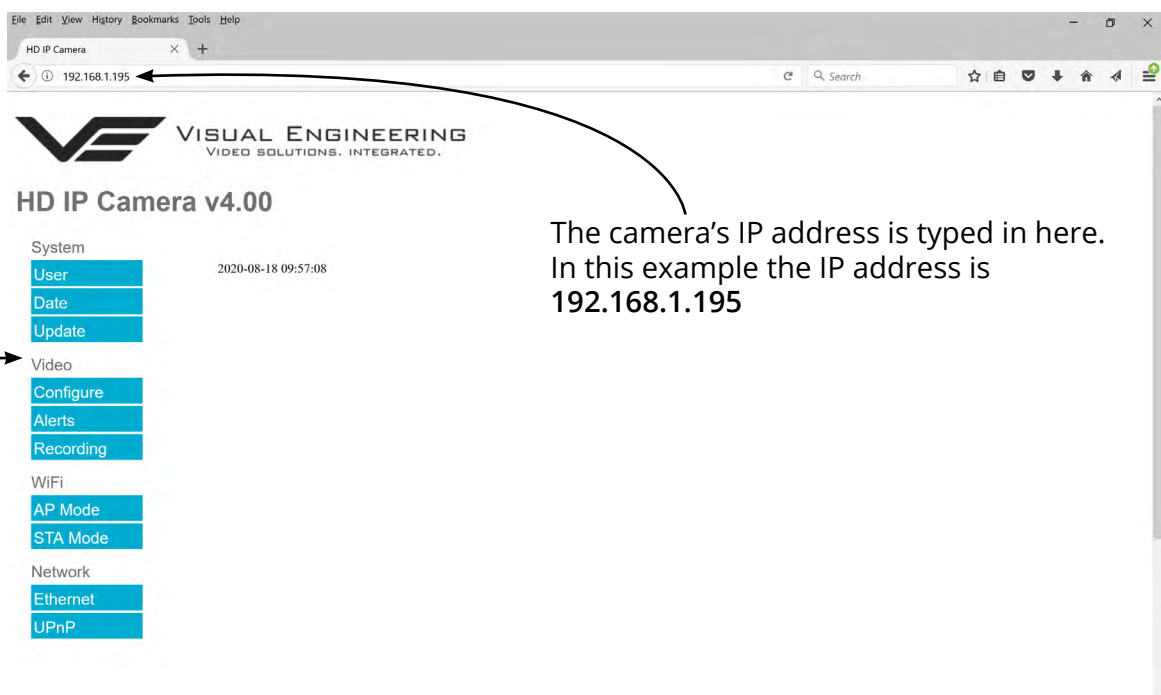
To re-configure to the original settings where the PC's IP address is obtained automatically follow the steps above except in step 5 select "Obtain an IP address automatically"

Web Browser Control

The primary mechanism for configuring the HD IP camera is its web browser interface.

The example screen below shows what is to be expected once a valid connection between the PC and camera has been established by typing the camera's IP address into the web browser's address bar. In this example it is the default address of **192.168.1.195**

On the left side of the screen are the Control Menus which allow the user to configure various settings in the HD IP camera. The functions of these menus are described in the following sections.



The camera's IP address is typed in here. In this example the IP address is **192.168.1.195**

Control Menus

User Menu

The user menu page allows users to configure the user ID and password of the camera. It is necessary to confirm the password to change it.

There is also the option to enable/disable the following:

- FTP Server Connection
- OSD (On Screen Display)
- Audio Out

Changes are only enabled when the **submit** button is pressed.



VISUAL ENGINEERING
VIDEO SOLUTIONS. INTEGRATED.

HD IP Camera v4.00

System

User

Date ID

Update Password

Confirm

Video

FTP Server ENABLE DISABLE

OSD Print(H.264) ENABLE DISABLE

Audio Out ENABLE DISABLE

WiFi

AP Mode

STA Mode

Network

Ethernet

UPnP

Date Menu

The date menu page allows the user to synchronise the camera time to a SNTP server. In this instance it is necessary to have the PC connected to a network.

If a network connection is not available it is possible to synchronise the camera to the PC time by ticking the "Sync Camera to PC Time" check box and pressing the **submit** button.

The "UTC Offset" can be altered to align the camera time with the local time zone. To align the camera to the actual PC time the "UTC Offset" should be made same as the value displayed in the "PC UTC Offset" field.





HD IP Camera v4.00

System	
User	Date <input type="button" value="submit"/>
Date	SNTP Server <input type="text" value="0.uk.pool.ntp.org"/>
Update	Camera Time <input type="text" value="2020-08-18 09:57:30"/>
	PC Time <input type="text" value="2020-08-18 09:57:31"/>
Video	UpTime <input type="text" value="18492 Days 07:57:31"/>
Configure	UTC Offset <input type="text" value="2"/>
Alerts	PC UTC Offset <input type="text" value="2"/>
Recording	Sync Camera to PC Time <input type="checkbox"/>
WiFi	
AP Mode	
STA Mode	
Network	
Ethernet	
UPnP	

Tick this box and press **submit** to sync the camera to the PC time

Update Menu

It is possible to update the firmware of the HD IP camera. There are three steps to updating the camera firmware, as shown on the right.

 **Only update the camera with files that have been approved by Visual Engineering.** 
Use of other files will render the camera inoperable.




HD IP Camera v4.00

System	
User	Update <input type="button" value="Submit"/>
Date	Firmware Download <input type="button" value="Browse..."/> No file selected. <input type="button" value="Submit"/>
Update	<input type="button" value="Restore Defaults"/>
Video	
Configure	
Alerts	<input type="button" value="Reset"/>

1. Select the Update tab 2. Browse to the file 3. Submit the file

Following a **Submit** the camera will update the firmware and display the following text:
Programming in Progress...Do not remove power
Wait until the web page clears this text before trying to move away from the current web page or powering off the camera. Updates typically take approx 3 minutes to complete.

 **Important:** To fully ensure the upgrade has finished it is advised to refresh the web page and check the banner displays "HD IP Camera v4.00" or the camera starts to once again stream video before switching off the power. It is advised that following a firmware update that the **Restore Defaults** button is pressed, this will revert the camera back to a default start state. The IP address of the camera will **revert** to its **default IP address of 192.168.1.195** following a power cycle.

Pressing the **Reset** button will completely re-start the camera.



Video Menu

The Video Page is where the camera's IP encoder parameters can be configured.

The encoder supports two encoding formats, H.264 and MJPEG. The choice of the format is initiated by the user when the video stream is started.

To initiate a H.264 stream from a camera with an IP address of 192.168.1.195 the URL is:
rtsp://192.168.1.195/h264

To initiate an MJPEG stream from a camera with an IP address of 192.168.1.195 the URL is:
rtsp://192.168.1.195/jpeg

It is possible to change the Encoder Type to any one of the following options:

- HD IP Camera
- PAL Input
- NTSC Input
- Guardian Node
- SWZ HD Camera
- LVDS Input 25Hz
- LVDS Input 29.97Hz
- SDI Input 25Hz
- SDI Input 29.97Hz



HD IP Camera v4.00

System

User	Video Configure		submit
Date	Source	ZA20S10	
Update	Resolution	1920 x 1080	
	Max FPS	30 FPS	
Video	Encoder Type	HD IP Camera	
Configure	RTSP Port	554	(1 to 65535)
Alerts	H.264 Resolution	1920 x 1080	
Recording	H.264 Quality	30	(0 to 51)
	H.264 IDR Frame	30	(1 to 1800)
WiFi	H.264 FPS	30fps	
AP Mode	Bitrate Control	<input checked="" type="radio"/> Constant Bitrate <input type="radio"/> Constant Quality	
STA Mode	H.264 Bitrate	6Mbit/s	
Network	M-JPEG Resolution	1920 x 1080	
Ethernet	M-JPEG Quality	30	(0 to 63)
UPnP	M-JPEG FPS	10fps	
	Bitrate Control	<input checked="" type="radio"/> Constant Bitrate <input type="radio"/> Constant Quality	
	M-JPEG Bitrate	8Mbit	
	Video Flip	<input checked="" type="radio"/> Normal <input type="radio"/> Flipped	
	Video Reverse	<input checked="" type="radio"/> Normal <input type="radio"/> Reversed	
	Video Flicker	<input checked="" type="radio"/> Outdoor <input type="radio"/> 50Hz Indoor <input type="radio"/> 60Hz Indoor	
	Video Mode	<input type="radio"/> Colour <input type="radio"/> Night <input checked="" type="radio"/> Auto	
	LED Control	<input checked="" type="radio"/> Off <input type="radio"/> Auto IR <input type="radio"/> Auto White	



For normal operation it is not necessary to adjust the Encoder Type.



For correct camera operation it is important that the Encoder Type matches the hardware configuration. For the HD IP camera this is always the HD IP Camera type.

The RTSP Port is the port number the IP video stream will be transmitted on, this has the default port number 554, which can be configured to another port number as required.



The Camera has two fundamental modes of operation:

- **Constant Bitrate.** This will output a constant bit rate IP video stream, as set in the Bit rate field.
- **Constant Quality.** In this mode the bit rate is varied in a effort to maintain a constant quality. The target quality is set using a number between 0 to 51, the lower the number the higher the quality, this is set in the quality field. Amendments to this value are only allowed when the constant quality mode is enabled. In this mode the 'ceiling' bit rate is controlled by the value set in the Bitrate field, the encoder will attempt to limit the maximum bit rate to this value.

H.264 Resolution

The maximum resolution is 1920x1080, users can select lower resolutions if there is restricted bandwidth available.

H.264 FPS (frames Per Second)

The maximum frame rate is 30fps, users may choose to select lower frame rates, thereby reducing the bandwidth required.

H.264 IDR Frame changes to the I frame interval balances the stream's quality against latency, the lower the number the lower the latency. Lower latency however can incur picture degradation due to the effect of limiting the decoder buffer.

Video Flip can be useful when the camera is installed upside down.

Video Reverse can be useful when viewing the image via a mirror.

Video Flicker can be adjusted to suit the local mains frequency when the camera is used under artificial lighting conditions.

Night Video Mode will increase the sensitivity of the camera under low light conditions.

LED Control for cameras with LED illuminators included. Select either Off or Auto mode for the LED type, the LED type will become active as determined by the ambient light level.

Users should press the **submit** button to enable any changes.

Video Frame Preview

It is possible to view a single still image from the camera via a web browser using the following URL format:

<http://192.168.1.195/still.jpg>

The above URL is applicable when the camera is set to its default IP address.



Example Settings

The bit rate of the IP stream can be adjusted to suit the system bandwidth available. Changes to the resolution and frame rate will adjust the stream's bit rate. The following table shows example bit rates for particular resolution and frame rate values.

Bit rate Available	Resolution	Frame Rate
5-10MB/s	1920x1080	30
4-5Mb/s	1920x1080	15
3-4Mb/s	1280x720	30
2-3Mb/s	800x450	30
1-2Mb/s	800x450	15
512kb/s-1Mb/s	640x360	15
256-512kb/s	320x180	15

Alert Control

Motion and light level triggers can be configured such that an audible tone and a visual alarm alerts the viewer.

These controls can also be set using the [VE Camera Viewer](#)

Motion and dark to light level triggers can be used to trigger an OSD (On Screen Display) event. For this to occur users should ensure that the OSD Print option in the [User Menu](#) is enabled.

The level of motion required to invoke a trigger can be set with the Trigger Sensitivity between: Off, Low, Mid or High.

The duration of the alarm event will be the duration of the motion event plus the time set in the Trigger Duration field, values from 0 to 100 seconds are valid.

Users should press the **submit** button to enable any changes.



HD IP Camera v4.00

System

User	Alert Control	<input type="button" value="submit"/>
Date	Motion Sensitivity	<input checked="" type="radio"/> Off <input type="radio"/> Low <input type="radio"/> Mid <input type="radio"/> High
Update	Trigger Duration	<input type="text" value="10"/> Secs (0 to 100)

Video

-
-
-

WiFi

-
-

Network

-
-

Triggered OSD Alerts





Ethernet Menu

The camera's network parameters can be set by selecting the Ethernet menu.

The camera can operate with a fixed IP address, or can be allocated an IP address from the network. This is configured using the enable/disable Use DHCP Server button.



HD IP Camera v4.00

System		<input type="button" value="submit"/>
User	Ethernet	
Date	IP Address	<input type="text" value="192.168.1.195"/>
Update	Subnet Mask	<input type="text" value="255.255.255.0"/>
	Default Gateway	<input type="text" value="192.168.1.1"/>
	Primary DNS Server	<input type="text" value="210.94.0.73"/>
	Secondary DNS Server	<input type="text" value="211.33.40.5"/>
	Use DHCP Server	<input type="radio"/> ENABLE <input checked="" type="radio"/> DISABLE
	HTTP Ports	<input type="text" value="80"/>
Video		
Configure		
Alerts		
Recording		
WiFi		
AP Mode		
STA Mode		
Network		
Ethernet		
UPnP		

HTTP Ports

The default HTTP port and ONVIF HTTP port to control and configure the camera is 80.

Selecting one of the five options as shown in the drop down box on the right will set both the HTTP port and ONVIF HTTP port number.

Moving the camera's HTTP port number should only be carried out by users confident of keeping a track on what settings have been applied to the camera.

Setting a new IP address and new HTTP port simultaneously should be avoided.

Following changes.....users should press the **submit** button to enable changes.

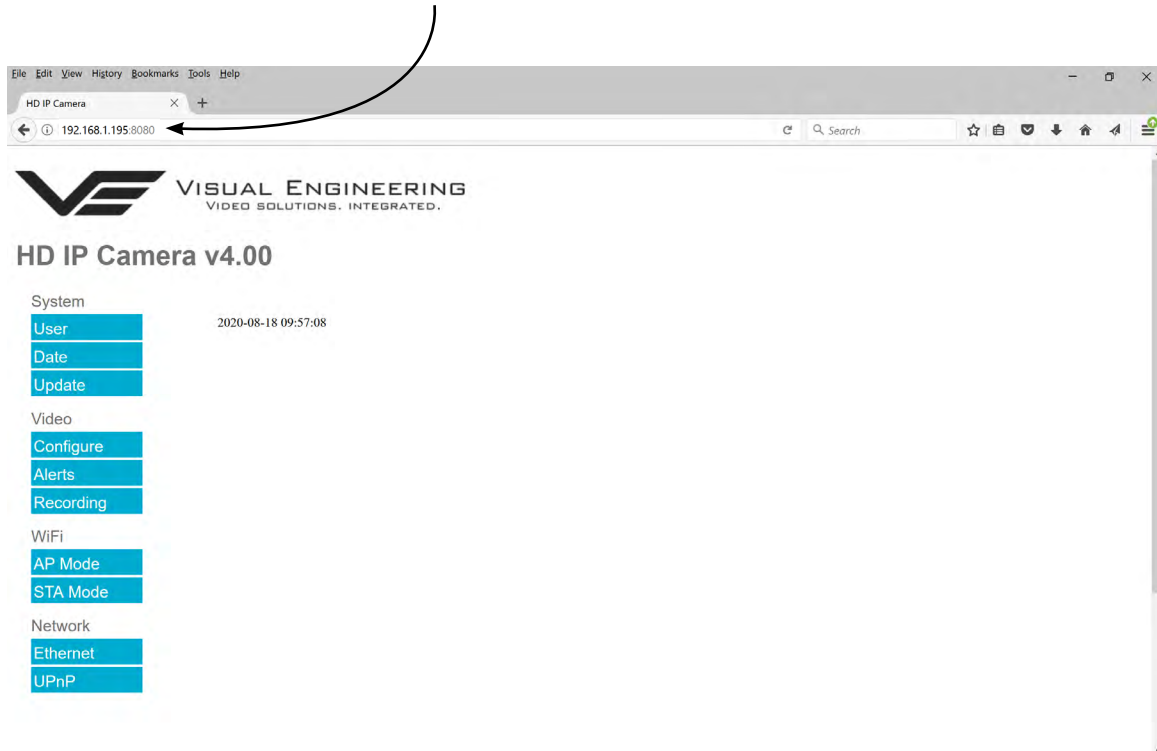


HD IP Camera v4.00

System		<input type="button" value="submit"/>
User	Ethernet	
Date	IP Address	<input type="text" value="192.168.1.195"/>
Update	Subnet Mask	<input type="text" value="255.255.255.0"/>
	Default Gateway	<input type="text" value="192.168.1.1"/>
	Primary DNS Server	<input type="text" value="210.94.0.73"/>
	Secondary DNS Server	<input type="text" value="211.33.40.5"/>
	Use DHCP Server	<input type="radio"/> ENABLE <input checked="" type="radio"/> DISABLE
	HTTP Ports	<input type="text" value="80"/>
		<input type="text" value="80"/>
		<input type="text" value="8008"/>
		<input type="text" value="8080"/>
		<input type="text" value="8081"/>
		<input type="text" value="8082"/>
Video		
Configure		
Alerts		
Recording		
WiFi		
AP Mode		
STA Mode		
Network		
Ethernet		
UPnP		

Once a camera has been set to a new port or IP address the web browser will be automatically re-directed to the camera's new URL.

In the example shown below the camera has been set to an IP address of 192.168.1.195 and port 8080. This extended URL format should be used to address cameras reconfigured to a HTTP port number which is not the default number of 80.



Unreachable Cameras

If a camera has been set to an unknown IP address it can be found by using the [VE Camera Viewer](#) this will find any HD IP Camera's IP address regardless of the IP subnet.

If unsure which port the camera has been configured to run a VMS software tool such as the ONVIF Device Manager. More information on VMS tools can be found in the [Video Management System](#) section.



UPnP Menu

The Universal plug and play menu allows the user to set the Device ID and Camera Name.

Users should press the **submit** button to enable changes.



HD IP Camera v4.00

System

User	UPnP	<input type="button" value="submit"/>
Date	Device ID	<input type="text" value="VE_195"/>
Update	Camera Name	<input type="text" value="VE_30P_FHD"/>

Video

- Configure
- Alerts
- Recording

WiFi

- AP Mode
- STA Mode

Network

- Ethernet
- UPnP



WiFi Menu

For WiFi capability to be available the HD IP Camera must have the WiFi option included.

The WiFi module requires the WiFi antenna to be connected to the SMA connector on the top of the HD IP Camera as shown on the right.



AP Mode Menu

The HD IP camera has an integrated WiFi Adaptor which supports its own WiFi access point. Using any WiFi enabled device it is possible to connect to the HD IP camera in order to monitor its video and audio.

The WiFi user configurable settings can be found in the WiFi Setup menu. The AP Mode WiFi menu allows the user to configure the WiFi access point settings, this is shown in the web page below along with a short description of the key parameters.



HD IP Camera v4.00

System

User	WiFi AP Mode Control		<input type="button" value="submit"/>
Date	Switch	<input checked="" type="radio"/> ON <input type="radio"/> OFF	<ul style="list-style-type: none"> • Enable or disable the WiFi Access Point
Update	SSID	<input type="text" value="VE_WIFI_CAM"/>	<ul style="list-style-type: none"> • The camera's WiFi Access Point name
	Channel	<input type="text" value="CH.13 [2.472Ghz]"/>	<ul style="list-style-type: none"> • WiFi channel, select one of 13 channels
Video	Max STA Count	<input type="text" value="5"/>	<ul style="list-style-type: none"> • Max number of stations (devices) allowed on the network

Configure

Alerts	WiFi AP Mode Security		
Recording	Authentication	<input type="radio"/> Open <input checked="" type="radio"/> WPA2-PSK	<ul style="list-style-type: none"> • Encryption standard, choose either open or WPA2-PSK
	Network Key	<input type="text" value="12345678"/>	<ul style="list-style-type: none"> • User configurable network password
WiFi	Server IP	<input type="text" value="192.168.15.1"/>	<ul style="list-style-type: none"> • User configurable IP address of the WiFi access point: To connect to the camera via WiFi the "Server IP" should be used in the client browser to view the video

AP Mode

STA Mode	WiFi AP Mode DHCP	
Network	Default Gateway	<input type="text" value="192.168.15.1"/>
	Start IP Address	<input type="text" value="192.168.15.2"/>
Ethernet	End IP Address	<input type="text" value="192.168.15.254"/>
	Subnet Mask	<input type="text" value="255.255.255.0"/>
UPnP	Lease Time	<input type="text" value="864000"/>

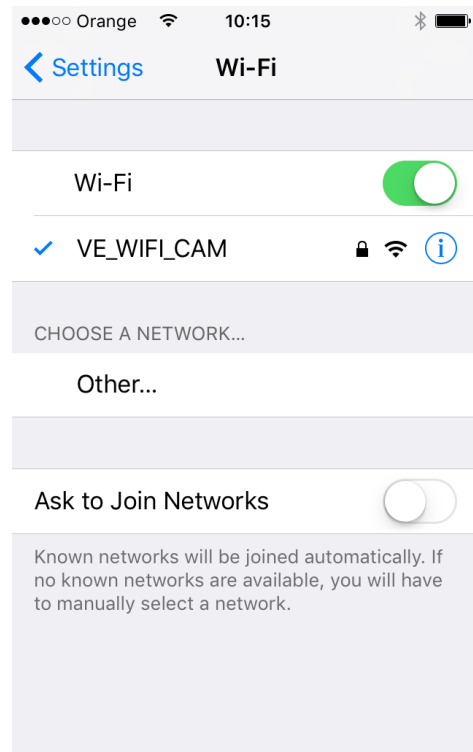


Connecting a WiFi Device

To connect a WiFi enabled device it is first necessary to search for the HD IP camera's WiFi signal.

Select the VE_WIFI_CAM signal as shown on the right.

If prompted for a network key enter the Network Key as defined in the AP Mode Security section, the default is:
12345678

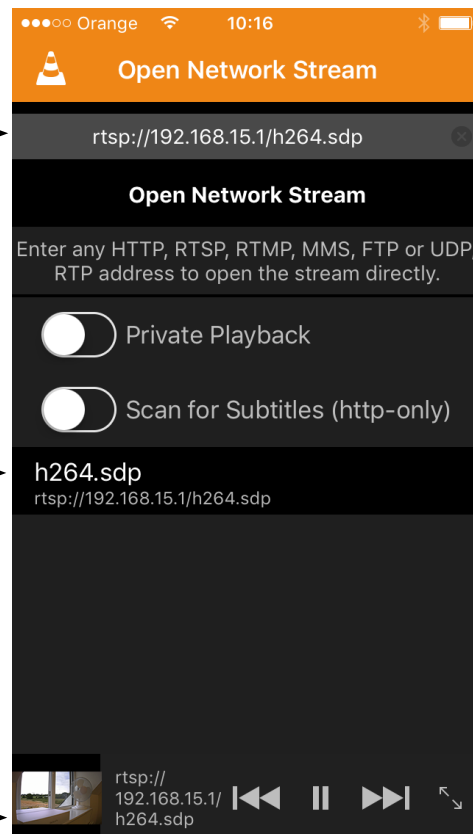


Open a WiFi Video Stream

It is necessary to have a video player application installed on the WiFi enabled device. In the example shown on the right VLC media player has been installed.

Use the Server IP address of the WiFi Adaptor and open an SDP media stream.

- Type the stream details into the box at the top **rtsp://192.168.15.1/h264.sdp**
- Select the stream here
- Select the video panel for full screen viewing





STA Mode Menu

The STA Mode WiFi sub-menu allows the user to configure the WiFi adaptor in station mode. This can be achieved by following the four steps as described on the right of the STA Mode web page shown below. Following any changes made the user must press the **submit** button. The camera will then save any changed parameters. Wait until the camera finishes re-configuring before trying to move away from the current web page or powering off the camera.



HD IP Camera v4.00

System

User	WiFi STA Mode Control submit	
Date	Switch	<input checked="" type="radio"/> ON <input type="radio"/> OFF ← 1. Set the switch to ON
Update	SSID List	MseC2412 <input type="button" value="Scan"/> ← 2. Click Scan & select the network from the populated drop down list
Video	Authentication	WPA2-PSK-CCMP <input type="button" value="Scan"/> ← 3. Enter login details
Configure	Password	sysfo_e ← 4. Select Connect
Alerts	Connect	<input checked="" type="radio"/> Connect <input type="radio"/> Disconnect ← 4. Select Connect
Recording	State	<input type="text"/>
WiFi	WiFi STA Mode DHCP	
AP Mode	DHCP Client	<input checked="" type="radio"/> ON <input type="radio"/> OFF
STA Mode	IP Address	192.168.1.102
Network	Subnet Mask	255.255.255.0
Ethernet	Default Gateway	192.168.1.1
UPnP	Primary DNS Server	192.168.1.1
	Secondary DNS Server	211.33.40.5

If required, a static IP address may be used by setting "Use DHCP Client" to OFF.

Once the camera is connected in STA Mode the web page control and video stream will be forwarded to the IP Address as shown in the DHCP Client section. For the example shown above this would be 192.168.1.102

In most cases it is possible to view the video feed and control the camera on this STA Mode IP Address and also on the camera's IP Address as defined in the Ethernet Menu. In certain network configurations it has been observed that the camera may not respond to its Ethernet IP Address once STA Mode is connected. If this is found to be the case use the STA Mode IP Address (192.168.1.102 in this case) to gain back control of the camera and view the video feed.

If the STA Mode is disconnected on a web page using the STA Mode IP Address it will be observed that there is no web page confirmation of task and further control will be lost on that particular IP Address.



Recording Menu

For recording to be available the HD IP Camera must have the recording option included. If this option is included the camera will be fitted with a 32GByte SD card. The SD card is located beneath a cover plate. For access to the SD card, remove the two T5 screws, cover plate and gasket.

SD card cover plate



Press down to release the SD card



The SD Card has a capacity of 32GBytes, this offers 17 hours of continuous recording at a total IP bit stream of 4Mb/s or 34 hours at 2Mb/s, etc. If recording capacity is achieved there is a user option to either stop recording or overwrite. The recording web page menu is shown below.

Note: Recording is temporarily paused during activity on the camera's web interface.

Timed Recording

There are 4 options for timed recordings, these are; Off, Continuous, Once and Daily.

Off = No recording takes place.

Continuous = Recording Continuously.

Once = Record once when the start time is reached and record for the set duration.

Daily = Record daily starting when the start time is reached and record for the set duration.



HD IP Camera v4.00

System

User	Timed Recording		submit
Date	Mode	<input checked="" type="radio"/> Off <input type="radio"/> Continuous <input type="radio"/> Once <input type="radio"/> Daily	
Update	Start Time	<input type="text" value="00"/> : <input type="text" value="00"/>	
	Duration	<input type="text" value="00"/> : <input type="text" value="00"/>	

Video

Configure	Trigger Recording	
Alerts	Motion Trigger	<input checked="" type="radio"/> Disable <input type="radio"/> Enable
Recording	Light Trigger	<input checked="" type="radio"/> Disable <input type="radio"/> Enable

WiFi

AP Mode	SD Card Management	
STA Mode	Overwrite Control	
	<input checked="" type="radio"/> Recording will stop when SD card is full	
	<input type="radio"/> Oldest video will be overwritten when the SD card is full	

Network

Ethernet	Erase and format the SD Card	Erase
UPnP		



Trigger Recording

Trigger Recordings can be triggered by either motion or light level change. Trigger recordings are disabled by default, if enabled, a recording will be made. The duration of the recording will be the duration of the motion event plus the time set in seconds in the trigger duration.

SD Card Management

In the event of the SD card becoming full, there are two options for Overwrite Control. One option is to have the recordings stop when the SD card is full, or the other option is to have the oldest material to be overwritten when the SD card becomes full.

Following any changes made in the menu the user must press the **submit** button . Wait until the camera finishes re-configuring before powering off the camera.

Erase and Format

The SD card will be completely erased and formatted if the **Erase** button is used. The user will be asked to confirm that this is the intention before the SD card memory card is actually erased.



Recovering Recordings

Record Format

Recordings are stored on the SD Card as individual 10 second duration .avi files. This is for a frame rate of 30fps, lower frame rates will increase the length of the stored file proportionately. For example a frame rate of 15fps will create a 20 second video clip.

Video clip lengths are kept intentionally kept short, this allows integration with the [VE Camera Viewer](#) so that recent events can be played back with a low data upload overhead.

The file size is proportional to the total bit rate selected by the user.

The files follow the a naming convention of:

YYMMDDHHNNSS

For example a file with the name of: 170801134611 would have the meaning:

YY = Year is 2017

MM = Month is 08, August

DD = Date is 01, the 1st of the month

HH = Hour is 13, 24 hour format

NN = Minutes is 46

SS = Seconds is 11

Additionally files containing motion will have an 'm' appended on the end. This is so any video clips with movement in the video can be easily identified. When searching motion files it is advisable to also check for activity in the video in the file preceding any motion tagged file.

For the file described above with motion in the video it will have the complete file name of:

170801134611m.avi

Recordings are stored in directories for each individual hour, the directory has the form:

YYMMDDHH

Since each file is 10 seconds long there will only ever be a maximum of 360 files in each directory.

Recordings can be accessed and downloaded via FTP (File Transfer Protocol) using either the [VE Camera Viewer](#) or an FTP application such as FileZilla.

The VE Camera Viewer is available to download from the VE website at:

www.visualengineering.co.uk/supportdownload/26

FileZilla is a free application and can be downloaded from

<http://sourceforge.net/projects/FileZilla/>

If using FileZilla, downloaded recordings can be played in players such as VLC either individually by selecting Play stored File or in groups by creating a play list.

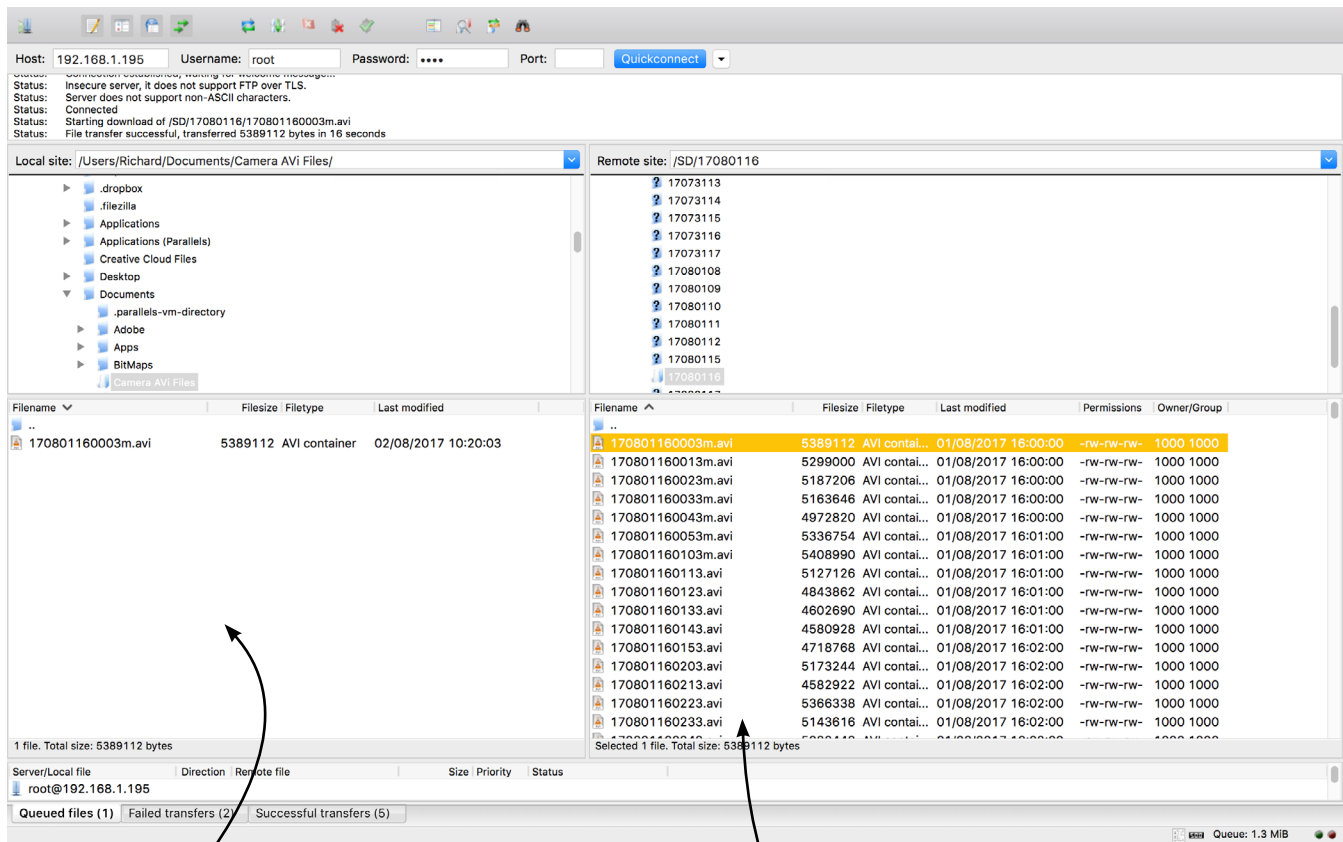


Using FileZilla

With FileZilla downloaded, installed and running it will appear as shown below.

Set the Host = IP Address of Camera, default IP Address of **192.168.1.195** is shown here
Username = Camera Username, the default is **root**
Password = Camera Password, the default is **1234**

Then press 'Quickconnect'



Files can be dragged across to the location selected on the local computer

File structure on the SD card of the camera

Recordings on the camera will be stored in the directory structure: SD/YYYYMMDDHH/ as shown above. Individual files can then be selected and downloaded or dragged across to the storage location selected on the local computer.



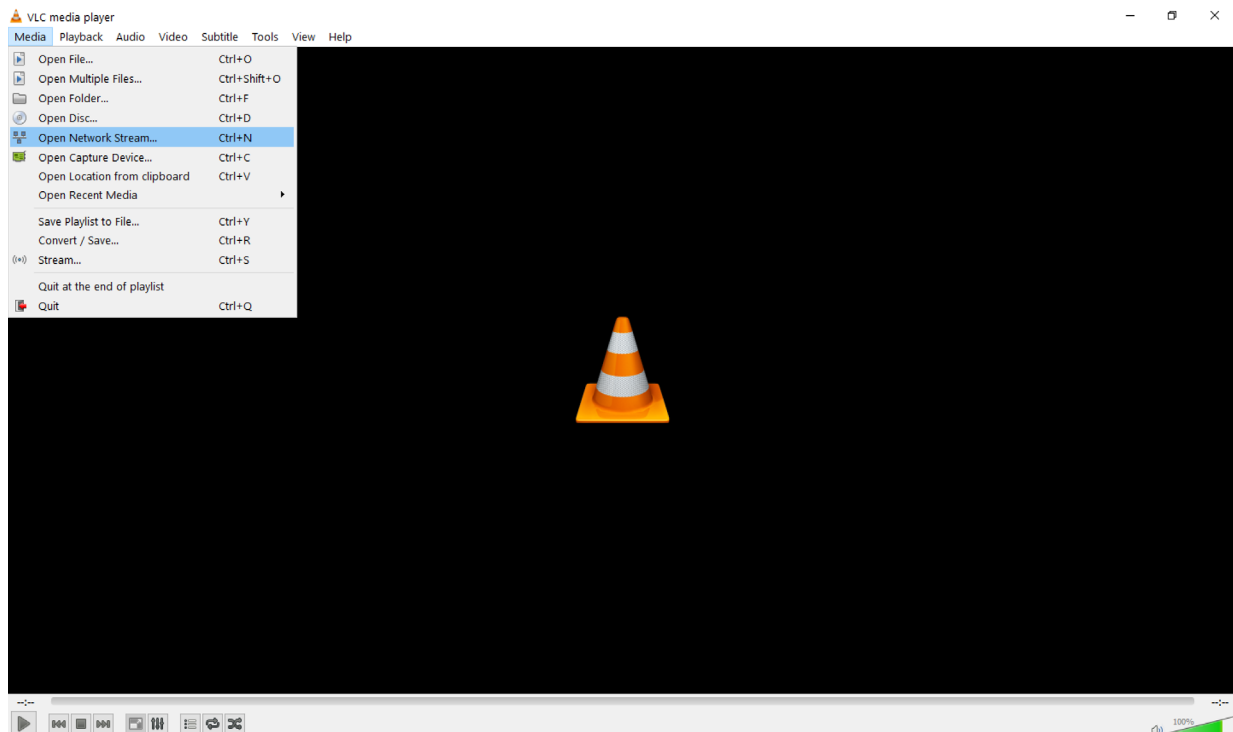
Using VLC to Play Streams

The HD IP Camera is compatible with many players, a simple freeware player is VLC Media Player. Users should download VLC Media Player and run the application.

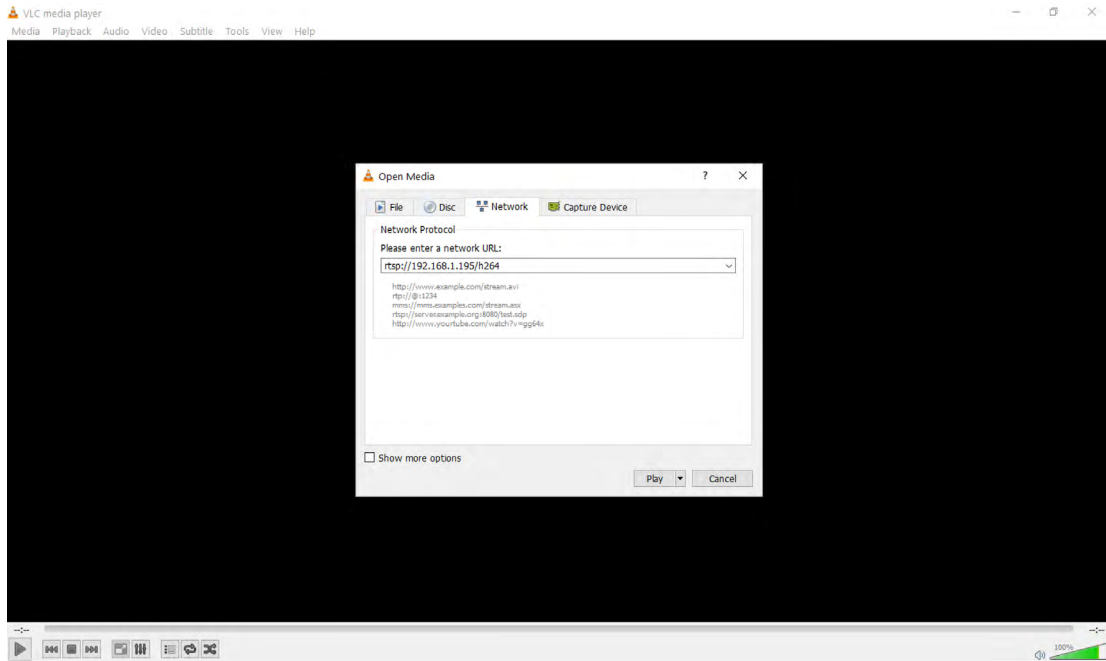
VLC is a free media player and can be downloaded from:

http://www.videolan.org/vlc/index.en_GB.html

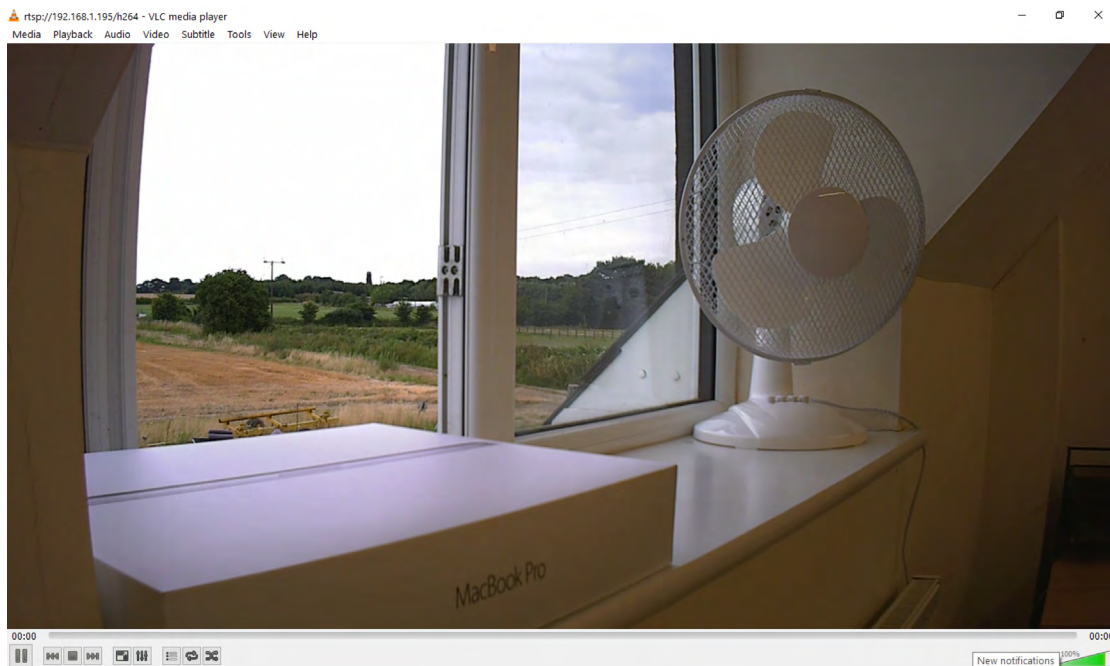
- Enable the VLC Media Player application.
- From the Media menu select the 'Open Network Stream' as shown below.



- Enter the camera URL and stream type, eg: `rtsp://192.168.1.195/h264`
The URL depends upon the IP address of the camera and the stream type, eg: h264 or jpeg. This is shown below



- Press play and the video stream will appear, as shown below.



The VE Camera Viewer

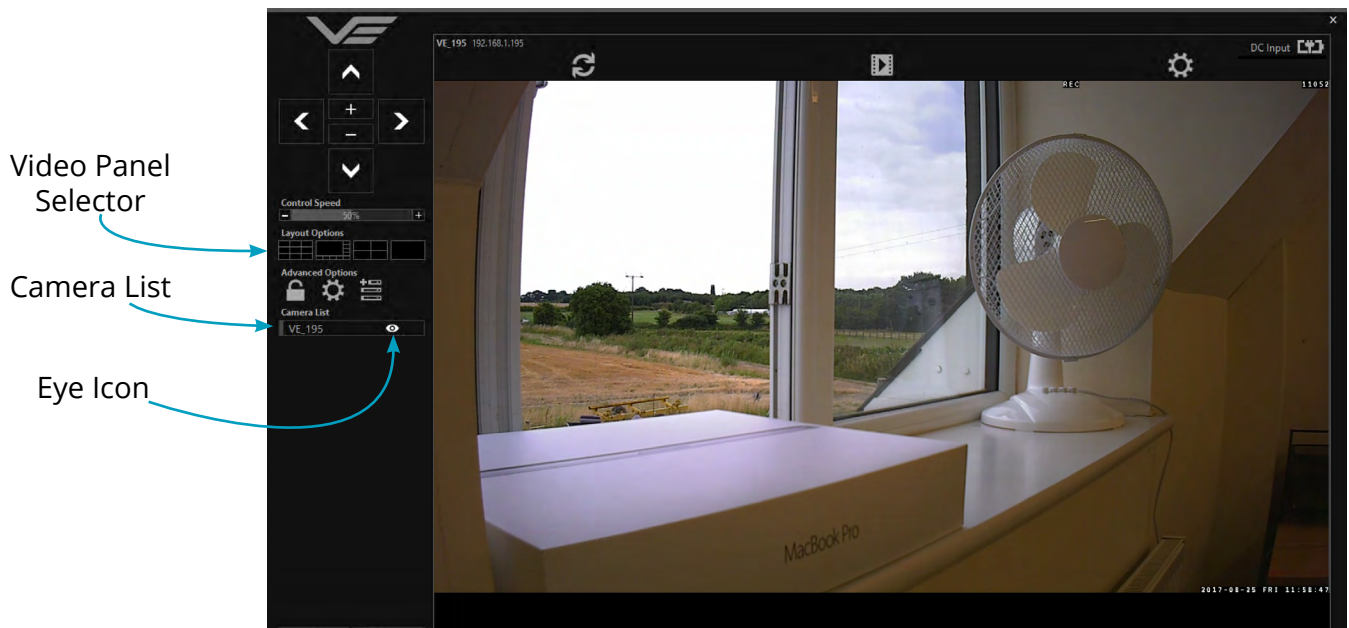
The VE Camera Viewer is a software application used to display the video from all cameras in the system. It will auto detect any VE cameras that are on the network and populate a list on the left hand side of the player.

The VE Camera Viewer software can be downloaded from the VE website support page or from the memory stick provided in the kit.

www.visualengineering.co.uk/supportdownload/26

Viewing Video

The VE Camera Viewer is intuitive and simple to use. Any camera on the network will be displayed in a list on the left hand side of the player. The video can be viewed by clicking the “Eye Icon” next to the camera’s name. The video panel selector can be used to select how the video panels are arranged, this is useful when several video feeds are in the system.



Video Panel Options

The top of the video panel displays information on the playback mode of the displayed video. In the above instance the video playback is a Live stream, it can also be noted that the camera is currently recording since the REC OSD icon is shown. Since the HD IP camera does not contain an integrated battery the power source will be displayed as a DC input.

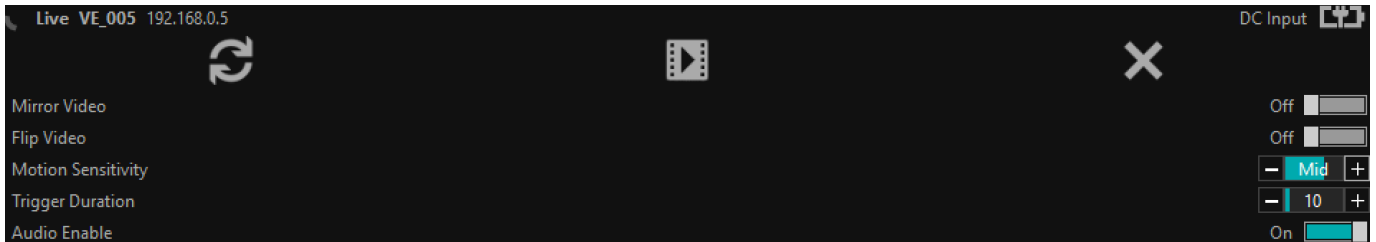


If the mouse is hovered between the video panel and the above information the player will offer the user the three options, Refresh the video session, Play a Recording or edit the Settings.



Settings

- The video can be orientated as required using the Flip Video and Mirror Video options
- The Motion Sensitivity can also be set to: Off, Low, Mid or High
- The Trigger Duration sets the alarm time (in secs) following the end of the triggered event
- The audio can be enabled and disabled as required



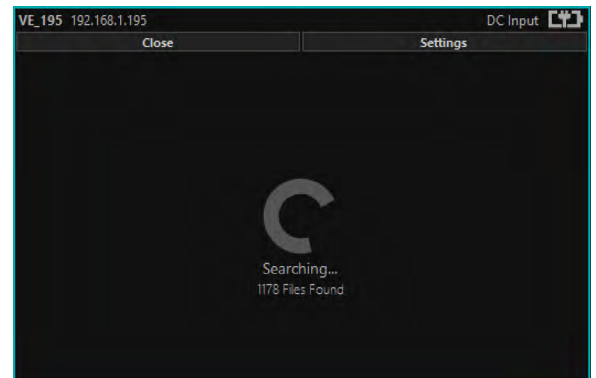
Play Recordings

Recordings will only be available if the HD IP Camera is fitted with the recording option.

If the Play Recording option is selected the player will allow the user to select a recording to playback.



The player will find all available files that are stored on the SD card in the camera. The update screen as shown on the right will be displayed until all files are discovered.



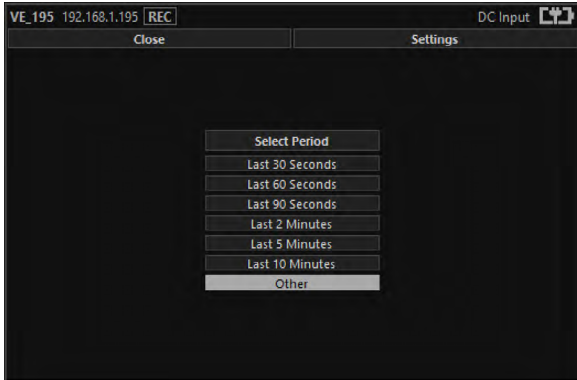
Users can then select a segment of recorded video to be played back from memory. Options are from 30 seconds to 10 minutes.

The full range of download periods is only available in advanced mode.

To access the advanced mode the user needs to hold keyboard keys "A", "D", and "V" then click on the padlock icon next to the Advanced User text.



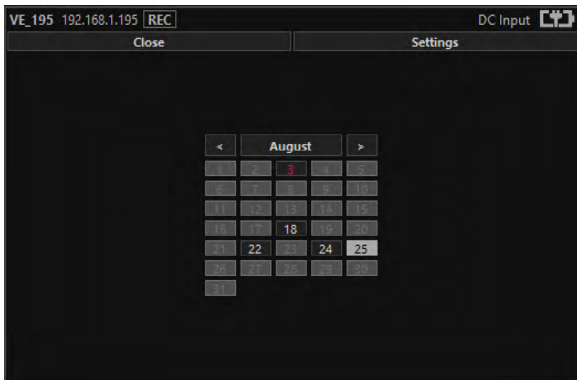
Select "Other" to choose a specific period of timed recording.



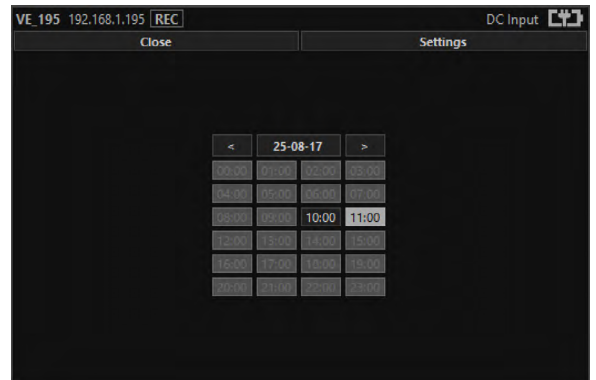
Select the required month, months that don't hold recordings are greyed out.



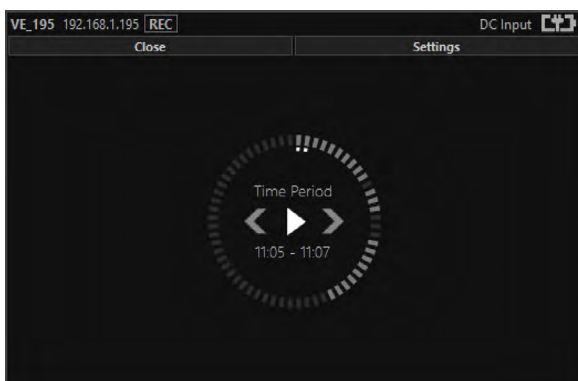
Select the required date, days that don't hold recordings are greyed out.



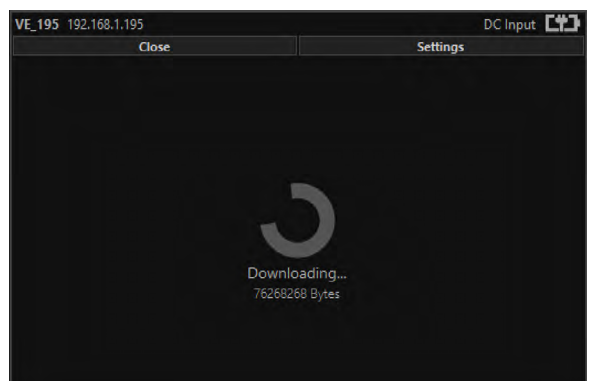
Select the required hour of day, hours that don't hold recordings are greyed out.



Select the required start and end time from the time dial. Press the play icon.



The files will then be downloaded, after which time the video recording can be viewed in the video panel.





Video Panel Coloured Border

The video panel is edged in a colour, the meaning of which is described in the following table.

Video Panel Edge Colour	Meaning
Red	A trigger alarm has occurred
Blue	The panel has been selected for Pan Tilt Zoom Control
Grey	No trigger alarms & not selected for PTZ Control

Trigger Alarms

The trigger alarms are enabled either via the player or the web interface. Once a trigger event occurs it will be displayed and sounded in the player. The video panel will have a red edge border and an icon will be shown in the bottom left corner. The trigger icon is either a motion trigger or a low to high light level change as described in the table below.

Trigger Icon	Trigger Source
	A low light level to high light level transition has been detected.
	Motion has been detected in the video.

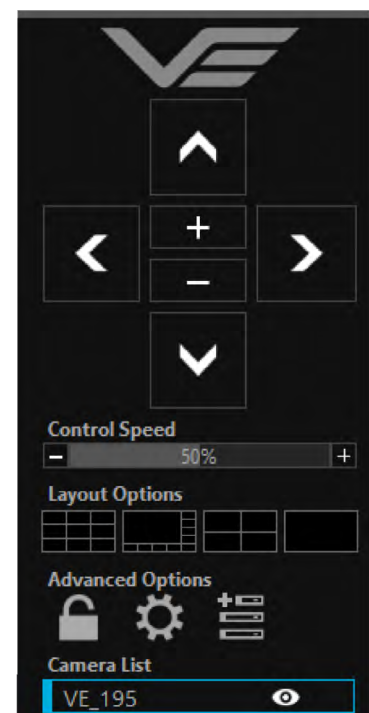
Pan, Tilt & Zoom Control

Select a camera from the Camera List, this will cause the selected camera description being edged in blue, as shown on the right. The video panel for the camera will also be edged in blue.

- Pan Control: left & right arrows
- Tilt Control: up & down arrows
- Zoom in: + symbol
- Zoom out: - symbol

Advanced User

To access the advanced mode, which allows full access to the stored recordings, the user needs to hold keyboard keys "A", "D", and "V" then click on the padlock icon next to the Advanced User text.



Selecting the centre settings icon allows access to several player settings including:

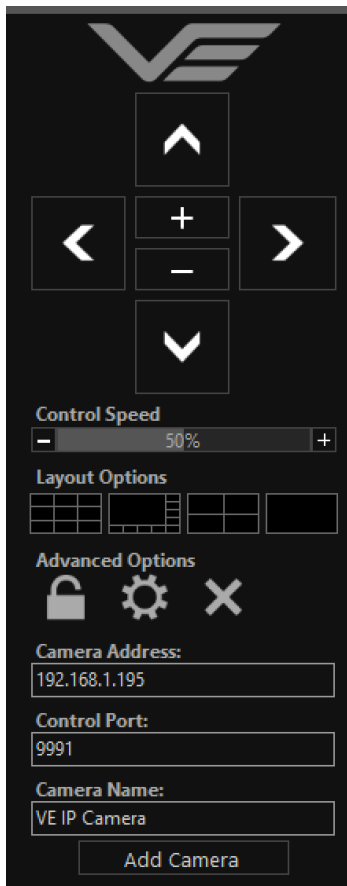
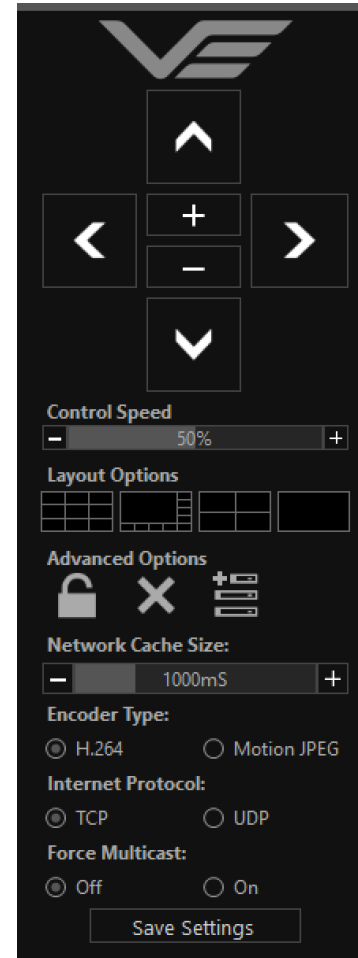
- Network Cache Size
- Encoder Type
- Internet Protocol
- Multicast

Increasing the Network Cache Size will cause the player to cache more data before streaming video. Decreasing this value will result in the latency of the video stream being reduced, values below 350mS are not recommended.

The camera is capable of transmitting H.264 and MJPEG video streams, select the preferred stream to be viewed.

The video stream packets can be sent over TCP or UDP, select the preferred transport method. More information on these methods is described in the [TCP Vs UDP](#) section.

Select Multicast to On sends a request to the camera to send a multicast video stream. Currently the camera does not support multicast streaming.



Selecting the right hand side icon allows the user to manually add a camera by IP address.

Adjustment to the TCP/IP control port and camera name settings can also be made.

Multiple Viewing

Multiple Viewers

It is possible to connect multiple instances of a video player to a single camera.

There is however a maximum limit at which the encoder bit rate can be set to whilst streaming video to multiple viewers using the unicast method of transmission. Bit rates set to a value greater than the allowed maximum value for a given number of clients will result in video breakup.

With the camera set to constant bit rate mode, the table below describes the maximum bit rate the camera can be set to for a given number of connected viewing clients using the unicast method of network transmission.

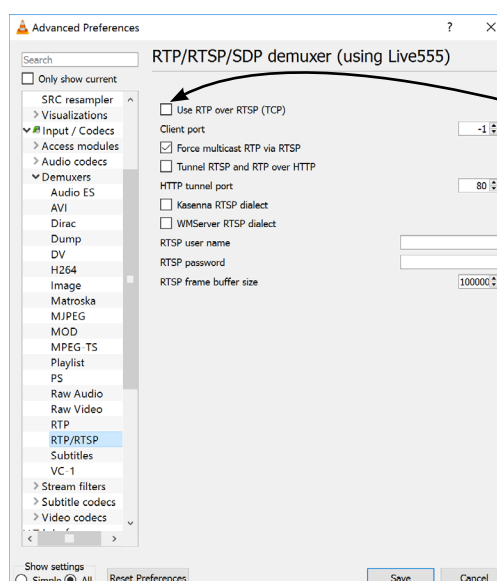
Client Count	Maximum Camera Bit rate
1	10Mb/sec
2	8Mb/sec
3	6Mb/sec
4	4Mb/sec

TCP Vs UDP

The camera is capable of transmitting a video stream over either UDP or TCP transmission protocols. The benefits of each protocol is particular to the specific deployment of the camera. In general terms UDP is a more efficient method which carries less overhead than TCP but lacks some reliability as not all video frames are required to be received in full.

For example, if the camera is used in a scenario where the video is being monitored in real time and the stream is being sent across an RF link that is susceptible to break up, UDP would be the best choice. The reason for this is that re-sending any missed video packets using the TCP method will result in out of date video frames being reconstructed, which will ultimately result in an increase to the video latency.

TCP/UDP in VLC



If this checkbox is ticked VLC will request that the camera sends video packets over TCP, otherwise it will request that the camera sends video packets over UDP.

ONVIF

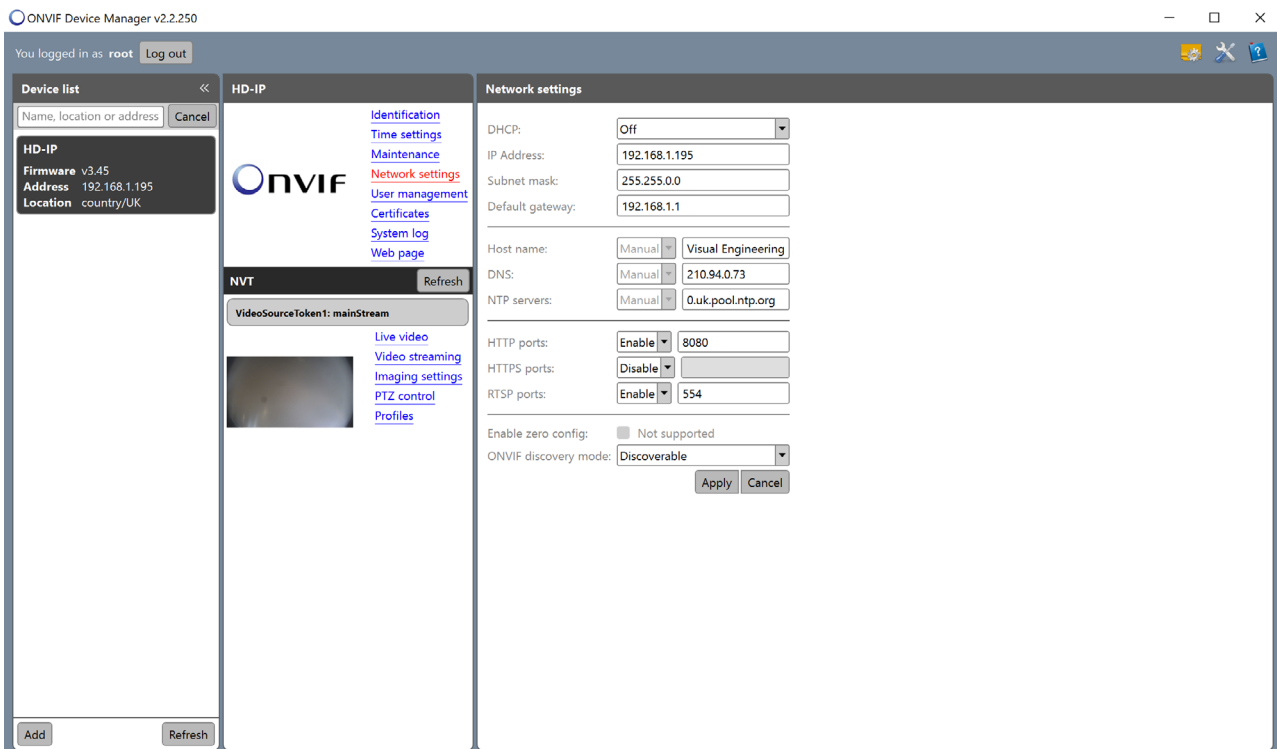
Video Management Systems

The HD IP Camera supports the ONVIF protocol such that it can be controlled and viewed on ONVIF compliant VMS platforms such as the ONVIF Device Manager, Milestone and Airship.

ONVIF Device Manager is available as a free download available here:

<https://sourceforge.net/projects/onvifdm/>

The software will locate HD IP Cameras on the network. Click the Network settings tab to display the port that the HD IP Camera is currently configured to. In the example shown below camera's port is set to 8080, therefore the camera's URL is 192.168.1.195:8080



If the controlling PC and HD IP Camera are on separate IP subnets and the camera's IP address is unknown run the [VE Camera Viewer](#) application, which will find the IP address of the camera.

Control Across The Internet

Port Forwarding

It is possible to control the HD IP Camera and view its video remotely through an internet connection. One way of achieving this is through port forwarding on a router that is connected to the internet and also connected to the HD IP Camera.

As many internet enabled routers are capable of providing this gateway, the settings and control interface will differ dependant on manufacturer and model.

The example below shows a router's NAT/PAT (Network Address Translation/Port Address Translation) configured to forward port 8080 (the HTTP port) and port 554 (the RTSP port) of the camera which has an IP address of 192.168.1.194

Both of these ports can be configured in the camera through the following camera web pages:

- The HTTP port can be configured in the [Ethernet Menu](#)
- The RTSP port can be configured in the [Video Menu](#)




NAT/PAT settings

these rules are needed to authorise a remote communication from Internet to reach a specific device of your LAN. you can also define the ports(s) that this communication will use.

NB: following rules are only applied with IPv4.



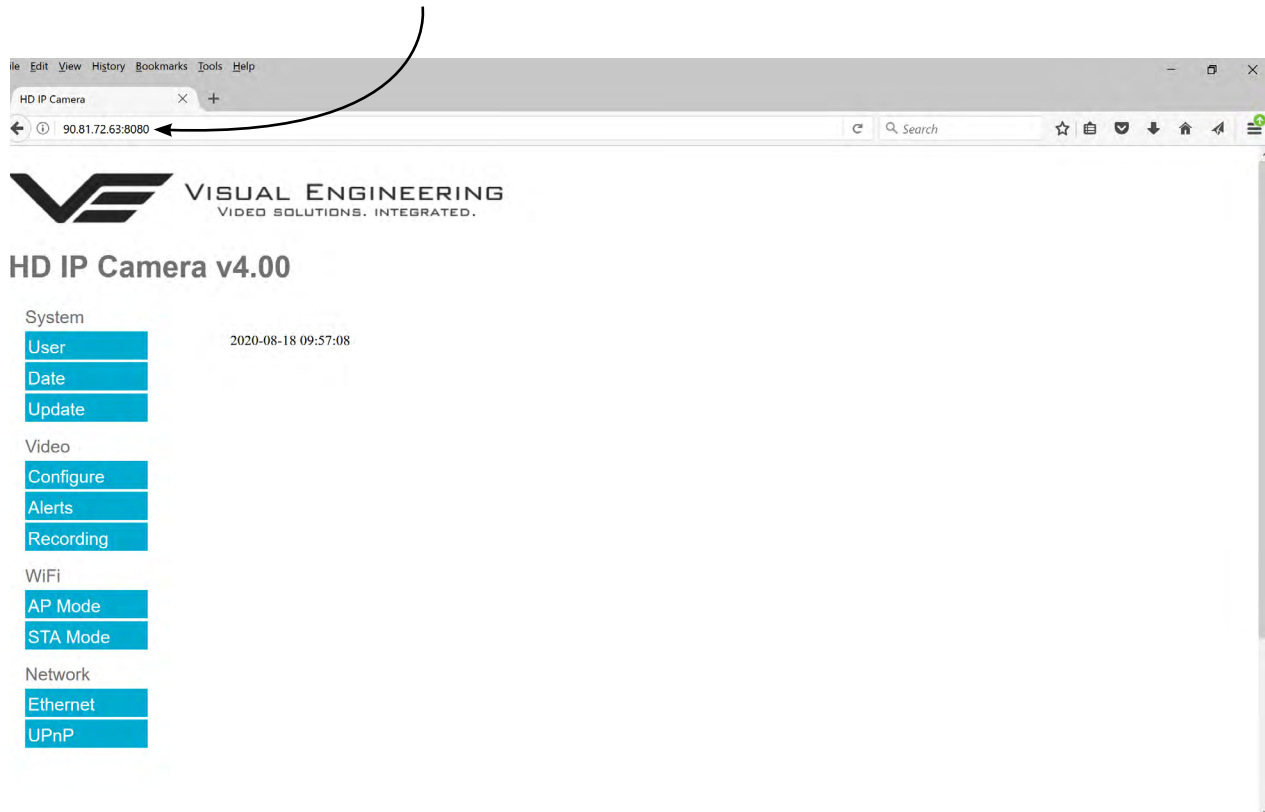
warning : make sure you have not filtered these ports in the firewall.

customize rules						
application / service	internal port	external port	protocol	device	activate	
Camera H 	<input type="text" value="8080"/>	<input type="text" value="8080"/>	TCP 	<input type="text" value="192.168.1.194"/> 		<input type="button" value="save"/>
HD IP Camera	554	554	both	192.168.1.194	<input checked="" type="checkbox"/>	<input type="button" value="delete"/>
Camera HTTP	8080	8080	TCP	192.168.1.194	<input checked="" type="checkbox"/>	<input type="button" value="delete"/>



Remote Configuration

Access to the remote camera's web pages are addressed by using the gateway IP address of the router along with the HTTP camera port that has been forwarded.



Remote Video Streaming

To stream the camera's video across the internet a URL similar to the ones described below should be used.

- `rtsp://90.81.72.63:554/h264`
- `rtsp://90.81.72.63:554/jpeg`

In the above URL examples the internet router's gateway IP address (90.81.72.63) and the camera's RTSP port (554) should be substituted where relevant.

Ensure that the video bit rate of the camera is matched to the available connection capacity.



Mounting

The HD IP Camera comes supplied with a Wall and Tripod Mount.

The Wall and Tripod Mount can be used to mount the HD IP Camera precisely against flat surfaces where precise alignment against a pinhole is required.

This is done by sliding the Wall and Tripod Mount over the camera body and locking it in place using the locking screw provided.

The lugs of the mount can then be used to screw the camera against a flat surface.

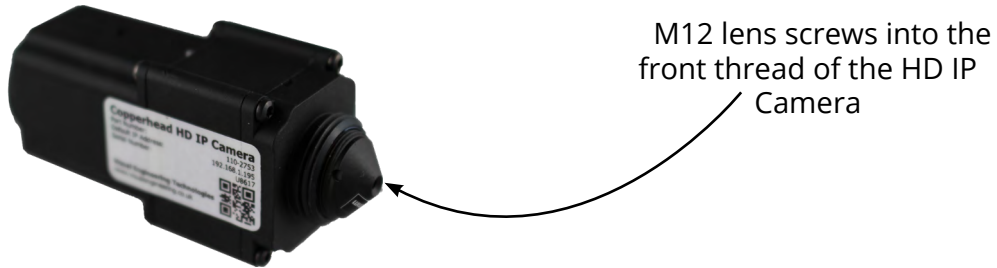
The base of the Wall and Tripod Mount holds a standard 1/4 20" thread allowing it to be screwed to standard camera tripods as shown here.



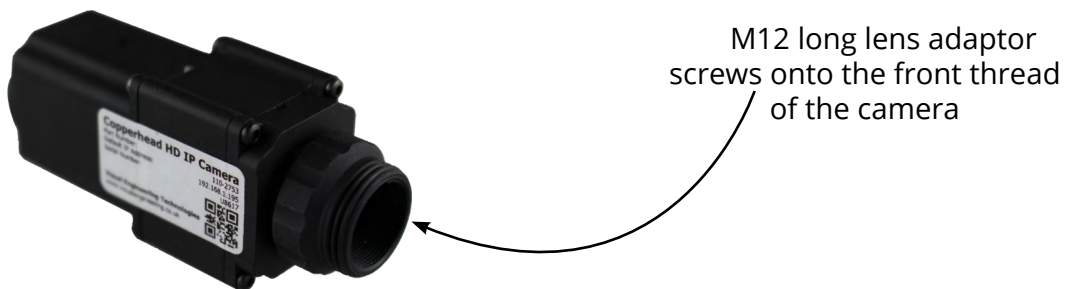


Changing the Lens

The HD IP Camera can be fitted with standard M12 lenses, these screw into the body of the camera as shown below. The standard lens fitted is 2.4mm offering a 90° field of view. In the kit, are replacement 2.1mm (120° field of view) and 4.3mm (60° field of view) lenses.



M12 lenses with a back focal length of $>3.2\text{mm}$ will require the M12 long lens adaptor. This is supplied in the camera kit. The M12 long lens adaptor screws into the front thread of the camera as shown below. This allows M12 lenses with a back focal length of $>3.2\text{mm}$ to be fitted and focused.



C and CS Mount Adaptors

For fitting larger C mount or CS mount lenses to the HD IP Camera use the adaptor included in the kit. These adaptors screw onto the front thread of the camera as shown below.



C Mount Adaptor



CS Mount Adaptor



Specifications

Specifications			
Camera Sensor	2Megapixel, CMOS	Input Voltage	6 to 16V DC
Camera Sensitivity	< 0.1 Lux	Recorder Storage	32GB Micro SD Card
Camera Resolution	Max: 1920 x 1080 Min: 320 x 240	Power Consumption	1.7W If WiFi is Added +0.9W to 1.2W (Range Dependant)
Max Bit Rate	10Mb/s	Optional WiFi	2.4GHz
Field of View	User Configurable 90° Pin Hole Standard	Operating Temp Range	-10°C to +50°C
Video Encoding	H.264 and MJPEG Dual Streaming	VMS Compliance	ONVIF
Audio	G711 Encoding, Voice Band Silicon Omni Microphone	Dimensions Straight Connector Right Angle Connector PoE Connector	20 x 25 x 55.5mm 20 x 25 x 48.5mm 20 x 25 x 74.2mm
Streaming Protocol	RTSP over TCP or UDP	Environmental	IP65 (Straight & RA Connectors)



Connector Interfaces

Straight & Right Angle Connectors

Mating half is Binder 99-9226-00-08.

1. +12v
2. GND
3. Eth TX+
4. Eth TX-
5. Eth RX+
6. Eth RX-
7. TXD (from unit, debug path)
8. RXD (to unit, debug path)

PoE Connector

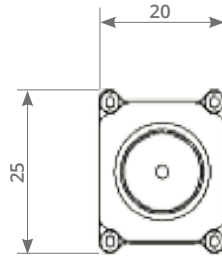
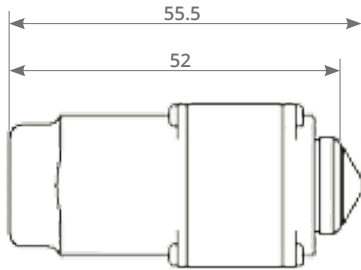
Mating half is male RJ45.

PoE is auto between Modes A & B, hence power can appear on different pins dependant upon which mode the power injector supports.

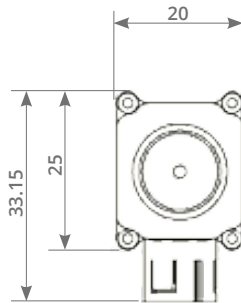
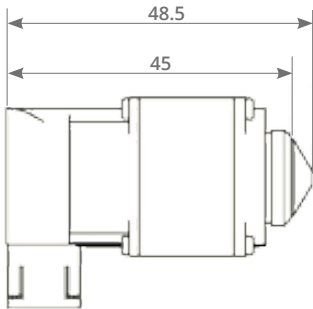
		Mode A	Mode B
1.	Eth TX+ PoE+		
2.	Eth TX- PoE+		
3.	Eth RX+ PoE-		
4.		NC	PoE+
5.		NC	PoE+
6.	Eth RX- PoE-		
7.		NC	PoE-
8.		NC	PoE-



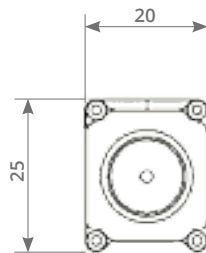
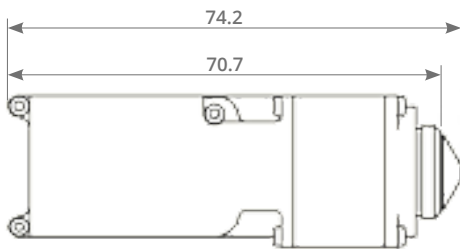
Dimensions



Straight Connector
Part No: 110-2753



Right Angle Connector
Part No: 110-2757



Power Over Ethernet
RJ45 Connector
Part No: 110-2761

Visual Engineering Technologies LTD

Kemps Farm
Stanway
Colchester
Essex
CO3 8NB
UK



Product specifications subject
to change without notice

Tel: +44 (0)1206 211842
Web: www.visualengineering.co.uk
Email: sales@visualengineering.co.uk